

Q Profile double cylinder SX

greenteQ 6-pin profile-cylinder with emergency-function, EN 1303 certified with drilling- and core-extraction-protection.

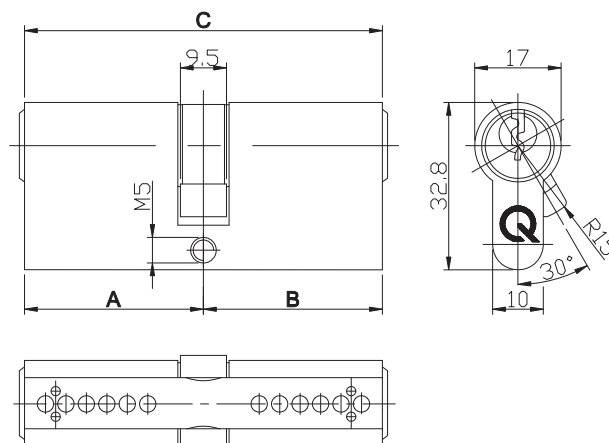
Description:

greenteQ profile double cylinder SX; standard profil, 6 pin system; emergency function (bilateral opening); certification according to EN 1303 : 2005; drilling protection; core extraction protection; anti-picking; basic length 30/30mm; deliverable extensions at one side or both sides each by 5mm possible; supplied with 3 keys; brass matt nickel-plated; keyed different (every cylinder has

individual locking. The 3 keys delivered with the cylinder are not available for the other cylinders) or keyed alike (all cylinders with the same locking could be opened or closed with one key.);

Key blank for keyed different cylinders or key for keyed alike cylinders available on request.

Picture and Drawing:



Technical Data:

Material of profile cylinder	brass
Surface	satın nickel-plated
Pins	6
Emergency function	yes
Certification acc. to	EN 1303 : 2005
Keys	3
Fixing screw	M5 x 50 mm und M5 x 80 mm
Packing unit	1 piece

(10 pieces per box / 50 pieces in carton)

Certificationkey acc. to EN 1303 : 2005

1	2	3	4	5	6	7	8
Category of use	Durability	Door mass	Fire resistance	Safety	Corrosion resistance and temperature	Key related security	Attack resistance
1	6	0	0	0	C	6	1

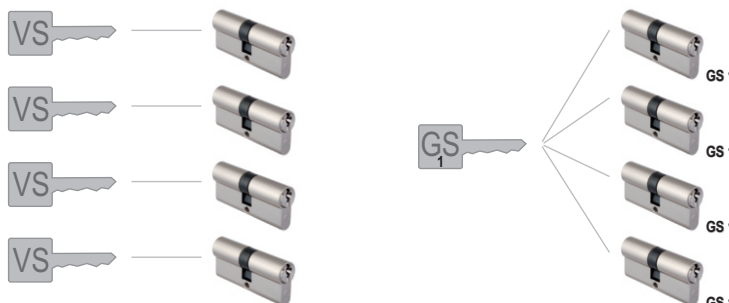


The greenteQ Profile knob cylinders are available in the following versions:

Length A / B (Type)

30 / 30 mm (SX 60)	40 / 40 mm (SX 80)
30 / 35 mm (SX 65)	40 / 45 mm (SX 85)
30 / 40 mm (SX 70)	40 / 50 mm (SX 90)
30 / 45 mm (SX 75)	40 / 55 mm (SX 95)
30 / 50 mm (SX 80)	40 / 60 mm (SX 100)
30 / 55 mm (SX 85)	40 / 65 mm (SX 105)
30 / 60 mm (SX 90)	40 / 70 mm (SX 110)
35 / 35 mm (SX 70)	45 / 45 mm (SX 90)
35 / 40 mm (SX 75)	45 / 50 mm (SX 95)
35 / 45 mm (SX 80)	45 / 55 mm (SX 100)
35 / 50 mm (SX 85)	45 / 60 mm (SX 105)
35 / 55 mm (SX 90)	45 / 65 mm (SX 110)
35 / 60 mm (SX 95)	50 / 50 mm (SX 100)
35 / 65 mm (SX 100)	50 / 55 mm (SX 105)
30 / 70 mm (SX 105)	50 / 60 mm (SX 110)

Advise:



VS: keyed different, GS (1-5): keyed alike

PRODUCT DATA SHEET

CYLINDER - Profile double cylinder SX

Instructions for use, performance and product data, and all other technical data for greenteQ products are general guidelines only. They describe the performance characteristics and material composition of our products. However, they constitute no guarantee according to § 443 BGB. Due to the various application possibilities it is the user's sole responsibility to satisfy himself that the product is adequate for his intended purpose. Any technical consultation with VBH, whether verbal, written or in the form of test samples is for your information only and is absolutely non-committal.

greenteQ

Edition 09/2010 | www.vbh.de

Q Profile knob cylinder SX

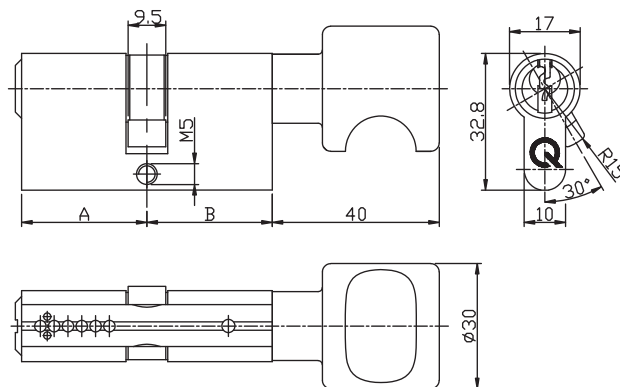
greenteQ 6-pin profile-cylinder, EN 1303 certified with drilling- and core-extraction-protection.

Properties:

greenteQ profile knob cylinder SX; standard profile; 6 pin system; certification according to EN 1303 : 2005; drilling protection; core extraction protection; anti-picking; basic length 30/30mm; deliverable extensions at one side or both sides each by 5mm possible; supplied with 3 keys; brass matt nickel-plated; keyed

different (every cylinder has individual locking. The 3 keys delivered with the cylinder are not available for the other cylinders) or keyed alike (all cylinders with the same locking could be opened or closed with one key); key blank for keyed different cylinders or key for keyed alike cylinders available on request

Product picture and technical drawing:



Technical data:

Material of profile cylinder	brass
Surface	satin nickel-plated
Pins	6
Certification acc. to	EN 1303 : 2005
Keys	3
Fixing screw	M5 x 50 mm and M5 x 80 mm
Packing unit	1 piece

(10 pieces per box / 50 pieces in carton)

Certificationkey acc. to EN 1303 : 2005

1	2	3	4	5	6	7	8
Category of use	Durability	Door mass	Fire resistance	Safety	Corrosion resistance and temperature	Key related security	Attack resistance
1	6	0	0	0	C	6	1

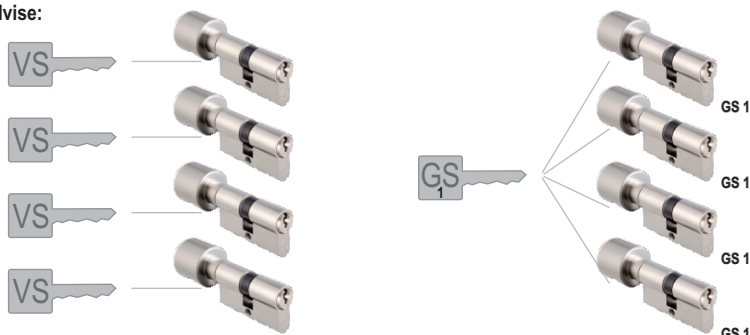


The greenteQ Profile knob cylinders are available in the following versions:

Length A / B (Type)

30 / K30 mm (SX 60)	40 / K55 mm (SX 95)
30 / K35 mm (SX 65)	45 / K30 mm (SX 75)
30 / K40 mm (SX 70)	45 / K35 mm (SX 80)
30 / K45 mm (SX 75)	45 / K40 mm (SX 85)
35 / K30 mm (SX 65)	45 / K45 mm (SX 90)
35 / K35 mm (SX 70)	45 / K50 mm (SX 95)
35 / K40 mm (SX 75)	50 / K35 mm (SX 85)
35 / K45 mm (SX 80)	50 / K40 mm (SX 90)
35 / K50 mm (SX 85)	50 / K45 mm (SX 95)
35 / K55 mm (SX 90)	50 / K50 mm (SX 100)
40 / K30 mm (SX 70)	55 / K35 mm (SX 90)
40 / K35 mm (SX 75)	55 / K40 mm (SX 95)
40 / K40 mm (SX 80)	60 / K40 mm (SX 100)
40 / K45 mm (SX 85)	65 / K40 mm (SX 105)
40 / K50 mm (SX 90)	

Advise:



VS: keyed different, GS (1-3): keyed alike

PRODUCT DATA SHEET

CYLINDER - Profile knob cylinder SX

Instructions for use, performance and product data, and all other technical data for greenteQ products are general guidelines only. They describe the performance characteristics and material composition of our products. However, they constitute no guarantee according to § 443 BGB. Due to the various application possibilities it is the user's sole responsibility to satisfy himself that the product is adequate for his intended purpose. Any technical consultation with VBH, whether verbal, written or in the form of test samples is for your information only and is absolutely non-committal.

greenteQ

Edition 09/2010 | www.vbh.de

Q WC knob cylinder SX

greenteQ WC knob cylinder with knob slot for WC doors with profile cylinder appliance.

Properties:

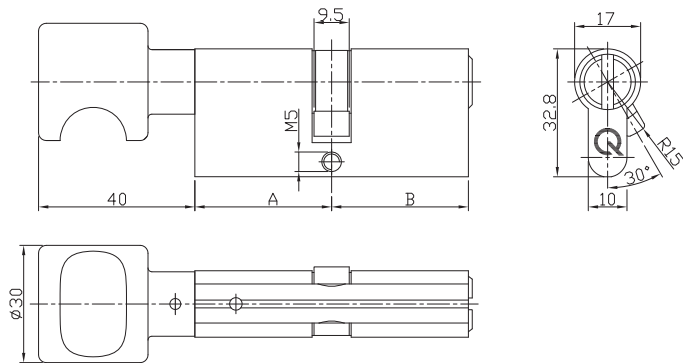
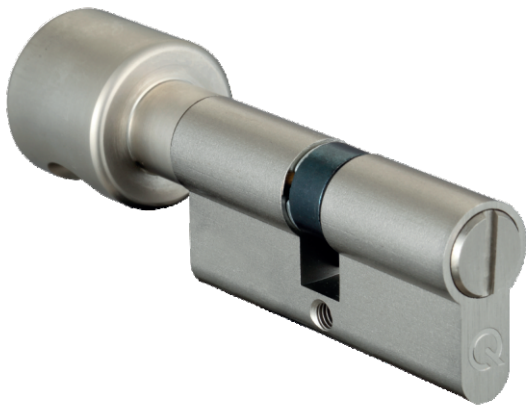
Q

greenteQ WC knob cylinder SX is made of brass matt nickel-plated. The greenteQ WC knob cylinder SX can be opened in the emergency with a flat

object from the outside. Two lengths of greenteQ WC knob cylinder SX, 32,5 / 32,5K mm and 35 / 35K mm, are available.

Product picture and technical drawing:

Q



Technical data:

Q

Material of profile cylinder	brass
Surface	satin nickel-plated
Pins	-
Emergency function	-
Certification acc. to	-
Keys	-
Fixing screw	1x M5 x 50 mm and 1x M5 x 80 mm
Packing unit	1 piece

(10 pieces per box / 50 pieces in carton)

The greenteQ WC knob cylinders SX are available in the following versions:

Length A / B (Typ)

32.5 / K32.5 mm (SX 60)
35 / K35 mm (SX 70)

Name	VBH Item Number
32.5 / K32.5 mm (SX 60)	398.383 / 0000
35 / K35 (SX 70)	398.382 / 0000

PRODUCT DATA SHEET



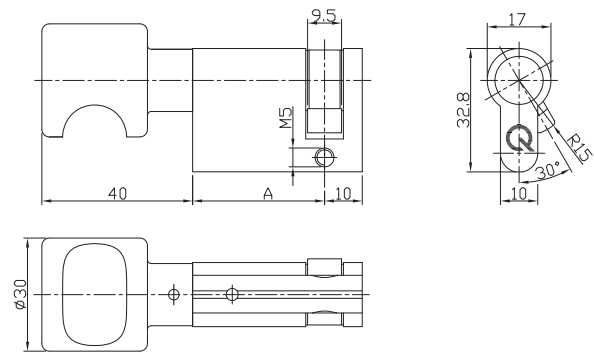
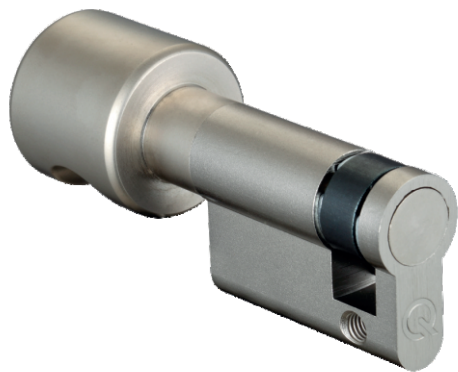
Q WC knob half cylinder SX

greenteQ WC knob half cylinder for WC doors with profile cylinder appliance.

Properties:

greenteQ WC knob half cylinder SX is made of brass matt nickel-plated. One length of greenteQ WC knob cylinder SX 35 is available.

Product picture and technical drawing:



Technical data:

Material of profile cylinder	brass
Surface	satin nickel-plated
Pins	-
Emergency function	-
Certification acc. to	-
Keys	-
Fixing screw	1x M5 x 50 mm and 1x M5 x 80 mm
Packing unit	1 piece

(10 pieces per box / 50 pieces in carton)

The greenteQ WC knob half cylinder SX is available in the following version:

Length A

35 mm

Name	VBH Item Number
35 mm (SX 35)	398.384 / 0000

PRODUCT DATA SHEET



CYLINDER - WC knob half cylinder SX

Edition 05/2012 | www.vbh.de

Instructions for use, performance and product data, and all other technical data for greenteQ products are general guidelines only. They describe the performance characteristics and material composition of our products. However, they constitute no guarantee according to § 443 BGB. Due to the various application possibilities it is the user's sole responsibility to satisfy himself that the product is adequate for his intended purpose. Any technical consultation with VBH, whether verbal, written or in the form of test samples is for your information only and is absolutely non-committal.

Q Profile half cylinder SX

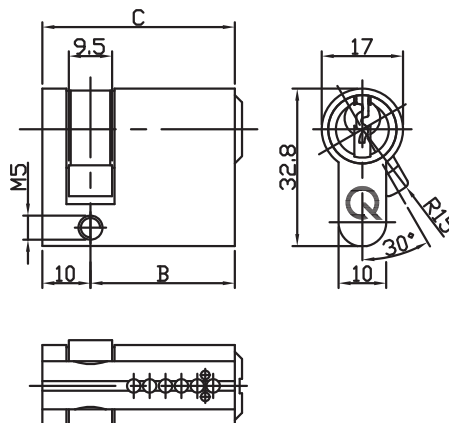
greenteQ 6-pin profile-cylinder, EN 1303 certified with drilling- and core-extraction-protection.

Properties:

greenteQ profile half cylinder SX; standard profile, 6 pin system; certification according to EN 1303 : 2005; drilling protection; core extraction protection; anti-picking; basic length 30mm; deliverable extensions at one side or both sides each by 5mm possible; supplied with 3 keys; brass matt nickel-plated; keyed different (every cylinder has individual locking. The 3 keys delivered with the

cylinder are not available for the other cylinders) or keyed alike (all cylinders with the same locking could be opened or closed with one key); Key blank for keyed different cylinders or key for keyed alike cylinders available on request.

Product picture and technical drawing:



Technical data:

Material of profile cylinder	brass
Surface	satın nickel-plated
Pins	6
Certification acc. to	EN 1303 : 2005
Keys	3
Fixing screw	M5 x 50 mm and M5 x 80 mm
Packing unit	1 piece

(10 pieces per box / 50 pieces in carton)

Certificationkey acc. to EN 1303 : 2005

1	2	3	4	5	6	7	8
Category of use	Durability	Door mass	Fire resistance	Safety	Corrosion resistance and temperature	Key related security	Attack resistance
1	6	0	0	0	C	6	1

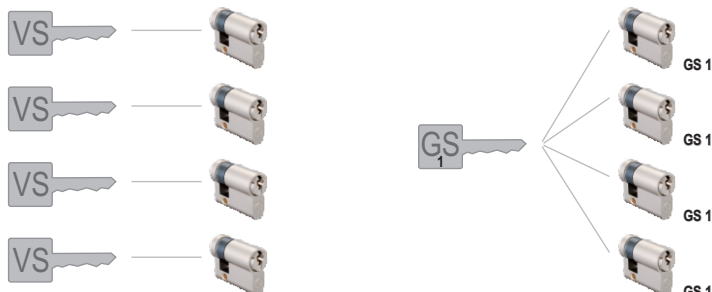


The greenteQ Profile knob cylinders are available in the following versions:

Length A (Type)

- 30 mm (SX 30)
- 35 mm (SX 35)
- 40 mm (SX 40)
- 45 mm (SX 45)
- 50 mm (SX 50)

Advise:



VS: keyed different, GS (1-5): keyed alike

PRODUCT DATA SHEET

CYLINDER - Profile half cylinder SX

Instructions for use, performance and product data, and all other technical data for greenteQ products are general guidelines only. They describe the performance characteristics and material composition of our products. However, they constitute no guarantee according to § 443 BGB. Due to the various application possibilities it is the user's sole responsibility to satisfy himself that the product is adequate for his intended purpose. Any technical consultation with VBH, whether verbal, written or in the form of test samples is for your information only and is absolutely non-committal.

greenteQ

Edition 09/2010 | www.vbh.de

greenteQ Profile double cylinder SX – Component parts

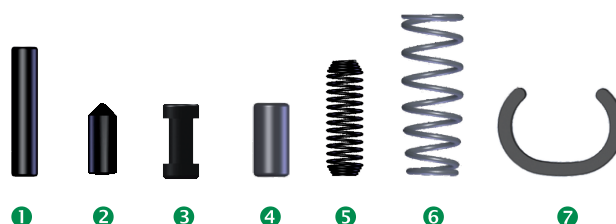
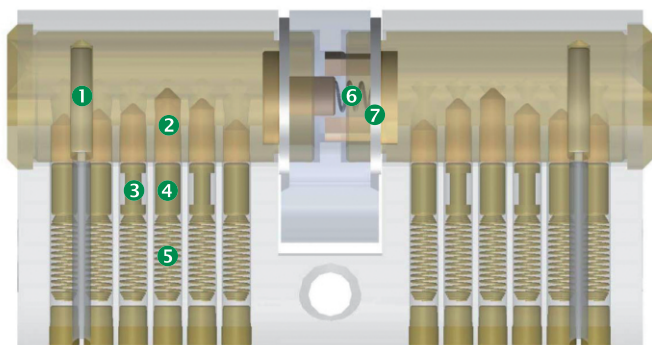
greenteQ 6-pin profile-cylinder with emergency-function. EN 1303:2005/AC:2008 and FZG 2010_01 certified with drilling- and core-extraction-protection.

Properties:

For the rebuilding of greenteQ profile cylinders from the individual locking to the same locking so that all doors of a building can be opened with a general key . For this purpose the profile double cylinder SX must be dismantled and opened. To open the retainer ring can be used a standard retainer ring pliers according to

DIN 5256 C, version A0 (straight) or A01 (angled) for example from the Orbis Will GmbH. To lock the retainer ring can be used as well the lock cylinder clamp 89-510/4492 by the same supplier.

Product picture:



Technical data:

Position	Description	Dimension	Packaging unit	VBH Item-No.
1	Hard metal pin	2.0 x 10.0 mm	100 pcs.	391.123 / 0000
2	Core pin No. 1	2.45 x 4.2 mm	100 pcs.	391.120 / 0001
	Core pin No. 2	2.45 x 4.7 mm	100 pcs.	391.120 / 0002
	Core pin No. 3	2.45 x 5.2 mm	100 pcs.	391.120 / 0003
	Core pin No. 4	2.45 x 5.7 mm	100 pcs.	391.120 / 0004
	Core pin No. 5	2.45 x 6.2 mm	100 pcs.	391.120 / 0005
	Core pin No. 6	2.45 x 6.7 mm	100 pcs.	391.120 / 0006
	Core pin No. 7	2.45 x 7.2 mm	100 pcs.	391.120 / 0007
	Core pin No. 8	2.45 x 7.7 mm	100 pcs.	391.120 / 0008
3	Body pin fungus form	2.45 x 5.0 mm	100 pcs.	391.125 / 0001
4	Body pin cylindrical form	2.4 x 5.0 mm	100 pcs.	391.125 / 0002
5	Pin spring	2.4 x 12.5 mm	100 pcs.	391.124 / 0000
6	Coupling spring	2.3/2.8 x 10.0 mm	100 pcs.	391.122 / 0000
7	Retainer ring	-	100 pcs.	391.121 / 0000

Accessories:

For the rebuilding of greenteQ profile double cylinders SX will be needed one packaging unit of greenteQ assembling plug long and a corresponding amount of greenteQ assembling plug short according to the cylinder length. In addition, one packaging unit of greenteQ assembling plug short hollow will be always needed, it's independent from the cylinder length.

Explanation:

For 30 mm we suggest to use one packaging unit (3 pieces) of greenteQ assembling plug short.

For 70 mm we suggest to use 3 packaging units (9 pieces) of greenteQ assembling plug short.

Name	PU	VBH Item-Number
greenteQ Assembling plug long 12.60 x 100.00 mm	1 piece	391.126 / 0001
greenteQ Assembling plug short 12.60 x 6.15 mm	3 pieces	391.126 / 0002
greenteQ Assembling plug hollow 12.60 x 7.10 mm	2 pieces	391.126 / 0003

PRODUCT DATA SHEET

CYLINDER - Profile double cylinder SX – Component parts

Instructions for use, performance and product data, and all other technical data for greenteQ products are general guidelines only. They describe the performance characteristics and material composition of our products. However, they constitute no guarantee according to § 443 BGB. Due to the various application possibilities it is the user's sole responsibility to satisfy himself that the product is adequate for his intended purpose. Any technical consultation with VBH, whether verbal, written or in the form of test samples is for your information only and is absolutely non-committal.

greenteQ

Edition 05/2012 | www.vbh.de